

Grid Fleet Manager

Technical Data



Cloud Software Service for Managing Your MSA Portable Gas Detection Fleet

As a safety manager or industrial hygienist, you have aggressive safety goals. You need to ensure that your workers and work sites are safe and compliant with government regulations and corporate safety policies.

Gas detection is a big part of your safety program and requires lots of attention, administrative activities and reporting—resulting in distractions that prevent you from accomplishing your larger safety objectives.

MSA Grid Fleet Manager can help you minimize those interruptions and efficiently and proactively manage your fleet of portable gas detection. With this service you can consolidate and streamline all your gas detection related activities in one place—establishing a single source of truth for all your detection records.



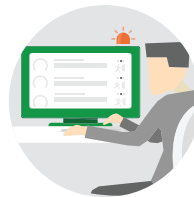
Information Access

- Receive a daily e-mail notification about your fleet's status. Quickly discern what needs your attention and take action.
- Access your fleet information easily—at anytime and from anywhere.
- Find, download and share reports as you need them—calibrations, detector records or alarms.



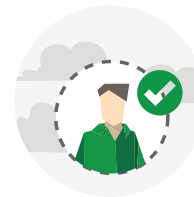
Fleet Compliance

- Ensure your gas detectors are ready for work (bump tested, calibrated and with sensors functioning properly). Reduce downtime.
- Proactively decommission any equipment that requires maintenance.
- Understand which equipment are in use (by whom) and which ones are available.



Risk Assessment

- See the data from, your devices and identify hazards your workers are exposed to.
- Understanding the root cause of incidents and initiate preventive measures.
- Translate findings into quality and worksite safety processes and actionable workflows.



Worker Compliance

- Drive accountability for the equipment by assign your fleet's detectors to a company, department, and worker.
- Understand if the devices are being properly used and operated.
- Identify training opportunities based on equipment usage information.

We make tomorrow safer than today

Features

Key Features	Benefits
User-friendly web-based interface	Intuitive and accessible 24/7 with an Internet connection.
Record keeping and reporting	Quickly search equipment records for in-depth information about device status, test results, and alarms—and generate reports as needed.
Daily fleet status report email	Each morning, you'll receive a concise fleet summary e-mail. If your fleet is healthy, you're done!
Assign equipment labels	Assign your equipment to locations, departments, workers and more—making it easier to search your records and manage Grid permissions later.
Automatic updates	We publish improvements every few weeks, so your Grid experience gets easier and more valuable with each passing month. Updates are automatic and IT-free.
Multiple locations management	Manage as many devices across as many physical locations as you need with one Grid account.
Secure cloud environment	Your data is stored in exclusive secured spaces to ensure and preserve data privacy and integrity.

Specifications

User Interface	
Supported by the following browsers	Mozilla Firefox, Google Chrome, Microsoft Edge
Browser versions	HTML-5 Support with TLS 1.2 or higher and allow WinSocket (WSS://)
Grid Cloud Service	
Certified	ISO/IEC 27001:2013 Certified by an accredited third-party vendor
Access Controls	Industry-standard verified user authentication. Optional SAML Authentication
Encryption in Transit	HTTPS TLS, MQTTS x509 Private Certificate, AES-256-bit encryption
Encryption at Rest	AWS Key Management Service (KMS) - AES-256-bit encryption
Data Backup	Immediately backed up upon receipt. Daily full backups. Double backups.
Resilience	AWS high availability, failover, and load balancing across 6 AWS Data Centers.
GX2 Connect WAN to Grid Connectivity	
GX2 Connect Service to Grid	Current Windows Server or Windows operating system on a physical/virtual local host .NET 4.7.2 or later, and TLS 1.2 or later MQTTS and HTTPS internet connectivity to the Safety io Grid x509 Private certificate Connection Security
Test Stand LAN to GX2 Connect Service Connectivity	
Test Stands to GX2 Connect Service	LAN TCP 5555 to and from GALAXY® GX2 Test Stands

Offer

As with other software as a service offering, with Safety io Grid Fleet Manager, you pay based on device usage. No need for enormous capital in advance.

Ordering

Please contact your local MSA sales representative or send an e-mail to connect@safetyio.com to get started with the ordering process.

Note to MSA Link Pro software users

To ensure continuity, if you are an MSA Link Pro user, all that historical data can be uploaded into your Grid account, so you have one gas detection data source of truth moving forward.

Data Privacy and Security

To help ensure that your information remains confidential and safe, we maintain a rigorous data privacy policy and strict protection system. Learn more here. <https://www.safetyio.com/company/cloud-security/>

Note: This Bulletin contains only a general description of the products shown. While product uses and performance capabilities are generally described, the products shall not, under any circumstances, be used by untrained or unqualified individuals. The products shall not be used until the product instructions/user manual, which contains detailed information concerning the proper use and care of the products, including any warnings or cautions, have been thoroughly read and understood. Specifications are subject to change without prior notice. MSA is a registered trademark of MSA Technology, LLC in the US, Europe, and other Countries. For all other trademarks visit <https://us.msasafety.com/Trademarks>.

MSA operates in over 40 countries worldwide. To find an MSA office near you, please visit [MSAsafety.com/offices](https://www.msasafety.com/offices).

